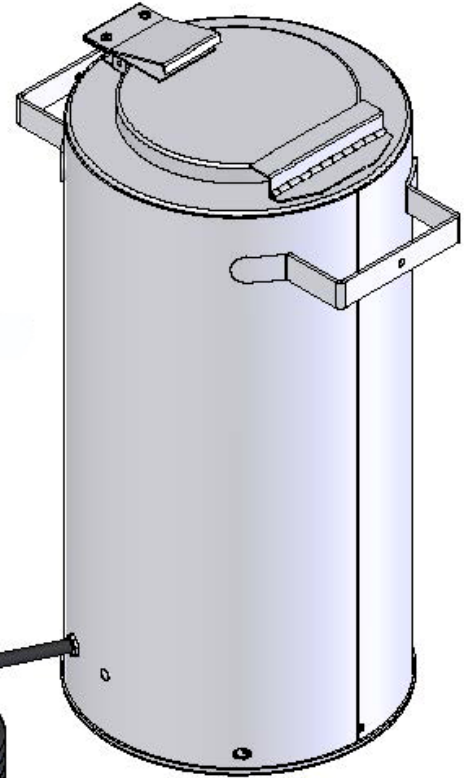
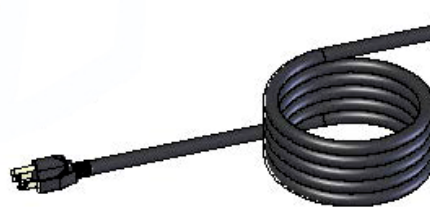




MODEL: 50
MODEL: 50-E
MODEL: 50-220
MODEL: 50-220-S



50 LB. (23 kg) CAPACITY



**OPERATING INSTRUCTIONS
 &
 SAFETY INFORMATION**

Website: www.gullco.com

Distributed by:

GULLCO INTERNATIONAL LIMITED – CANADA Phone: 905-953-4140 Fax: 905-953-4138 e-mail: sales@gullco.com
GULLCO INTERNATIONAL INC. – U.S.A. Phone: 440-439-8333 Fax: 440-439-3634 e-mail: ussales@gullco.com
GULLCO INTERNATIONAL [U.K.] LIMITED - EUROPE Phone: +44 1257-253579 Fax: +44 1257-254629 e-mail: uksales@gullco.com
GULLCO INTERNATIONAL PTY LIMITED - AUSTRALIA Phone: 61 (0) 7 3348-5515 Fax: 61 (0) 7 3348-5510 e-mail: ausales@gullco.com
GULLCO INTERNATIONAL INDIA PRIVATE - LIMITED Phone: 91-20-65260382 Fax: 91-20-26836656 e-mail: indsales@gullco.com
GULLCO INTERNATIONAL SHANGHAI – LIMITED Phone: +8621-50460341 Fax: +8621-50463554 e-mail: c.zhang@gullco.com

Model:	50 / 50-E / 50-220 / 50-220-S
Capacity:	50 lb. (23 kg)
Voltage:	115 Volts / 230 Volts Single Phase AC (See Rating Plate).
Wattage:	300 Watts (115 Volts) / 300 Watts (230 Volts)
Range:	100- 300° F / 38-148°C
Weight:	28 lbs. (12.7 kg)
External Dimensions:	H-24" x 77" Diameter (610mm x 280mm)

**THE FOLLOWING INSTRUCTIONS AND SAFETY WARNING SHOULD BE READ
BEFORE THIS EQUIPMENT IS CONNECTED AND PLACED INTO SERVICE**

BEFORE CONNECTION
ENSURE THAT THE SUPPLY VOLTAGE MATCHES THAT SHOWN ON THE RATING PLATE

Models 50, 50-E, 50-220 & 50-220-S portable Electrode Stabilizing Ovens are capable of maintaining electrodes in a dry state once removed from their storage site. They are intended for use by the welder while at the site and not for permanent storage of rods. The temperature is regulated by a thermostat to maintain constant internal temperature, whether rods are regularly removed or not. The temperature control is located on the bottom of the oven for protection from physical damage. A pilot light is included to indicate oven operation.

Care must be taken when loading and unloading electrodes from the oven. The electrodes and the rod lifter handle may be hot and it is essential that any user of this equipment wear protective gloves and protective eye wear.

To minimize the risk of electrical shock the ovens should not be exposed to rain or placed in water. Do not touch an oven that has been exposed to rain or fallen into water until the power cord has been disconnected from the power supply. Do not use the oven if the power cord or plug is damaged. This equipment must be connected to a suitable power supply using a recognized connector or fused switch. This equipment must be properly earth grounded. Before any attempt is made to remove the bottom cover, the power supply must be isolated and precautions taken to ensure that it cannot be restored while the unit is being worked on.

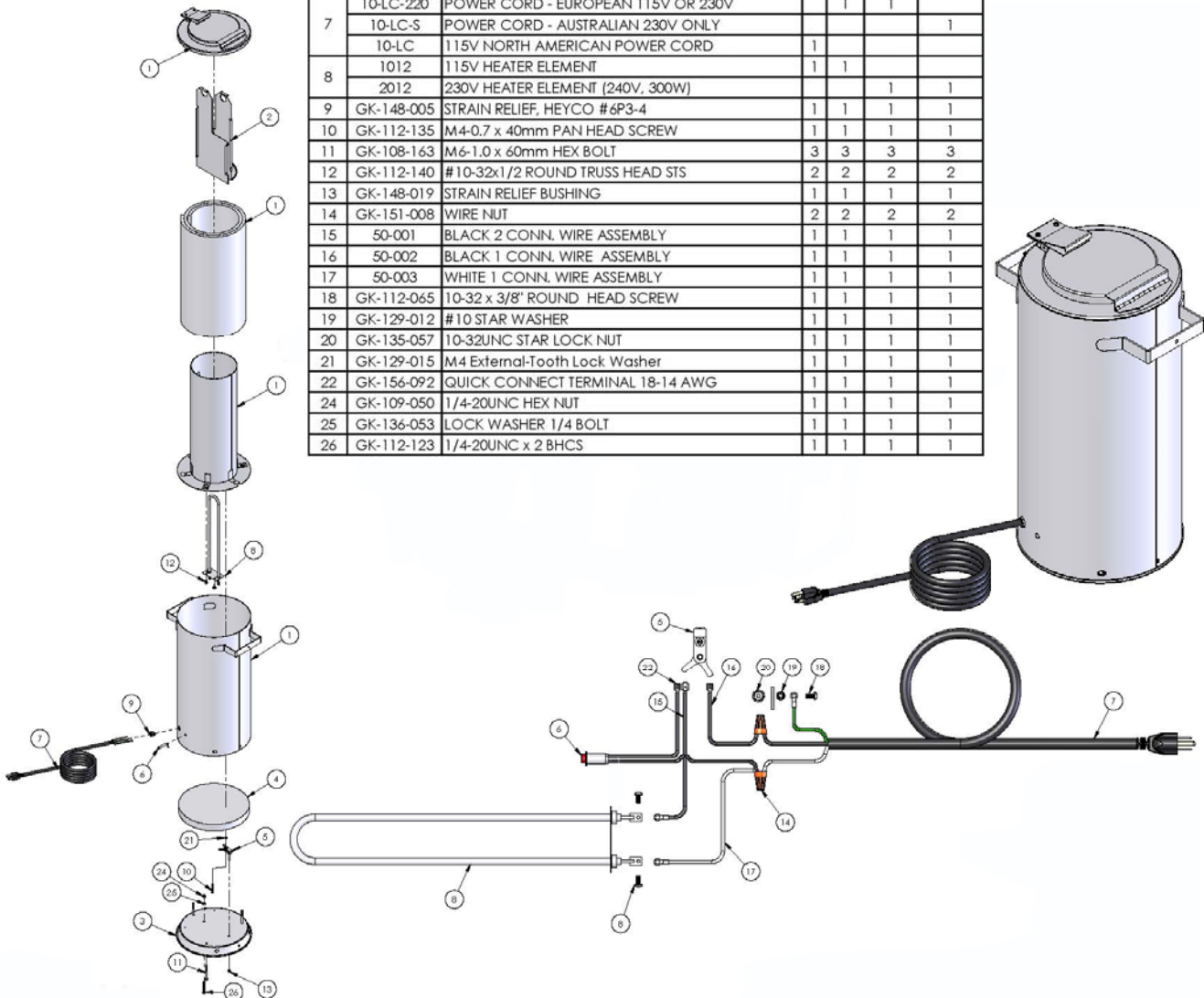
USING THE OVEN

The oven is loaded and unloaded from the top using the rod lifter. The rod lifter handle may be hot and gloves should be worn to prevent burns. The rod lifter should be pulled up and secured in the raised position using one of the two rests on the rod lifter. Electrodes may then be loaded or unloaded. When finished, the rod lifter should immediately be returned to the closed position.

To adjust the temperature setting of the oven, place the oven on its side on a bench or other raised surface. Rotate the thermostat shaft (located on the bottom of the oven) using a slot screw driver, clockwise to increase the temperature.

SPARE PARTS & SCHEMATIC

ITEM	PART NO.	DESCRIPTION	50	50-E	50-220	50-220-S
	GOV-50	MODEL 50 OVEN SHELL KIT (INCLUDES ITEMS 1-3)				
1	GOV-50-001	OUTER ASSEMBLY	1	1	1	1
	GOV-50-033	INNER HOUSING ASSEMBLY	1	1	1	1
	GOV-50-003	LID ASSEMBLY	1	1	1	1
	GOV-50-032	INNER INSULATION	1	1	1	1
2	50LR	ROD LIFTER	2	2	2	2
3	GOV-50-006	BOTTOM PAN WELD ASSEMBLY	1	1	1	1
4	GOV-50-031	BOTTOM INSULATION	1	1	1	1
5	1018-T	LONG STEM THERMOSTAT	1	1	1	1
	1019	115V PILOT LIGHT	1	1		
	2019	230V PILOT LIGHT			1	1
7	10-LC-220	POWER CORD - EUROPEAN 115V OR 230V		1	1	
	10-LC-5	POWER CORD - AUSTRALIAN 230V ONLY				1
	10-LC	115V NORTH AMERICAN POWER CORD	1			
8	1012	115V HEATER ELEMENT	1	1		
	2012	230V HEATER ELEMENT (240V, 300W)			1	1
9	GK-148-005	STRAIN RELIEF, HEYCO #6P3-4	1	1	1	1
10	GK-112-135	M4-0.7 x 40mm PAN HEAD SCREW	1	1	1	1
11	GK-108-163	M6-1.0 x 60mm HEX BOLT	3	3	3	3
12	GK-112-140	#10-32x1/2 ROUND TRUSS HEAD STS	2	2	2	2
13	GK-148-019	STRAIN RELIEF BUSHING	1	1	1	1
14	GK-151-008	WIRE NUT	2	2	2	2
15	50-001	BLACK 2 CONN. WIRE ASSEMBLY	1	1	1	1
16	50-002	BLACK 1 CONN. WIRE ASSEMBLY	1	1	1	1
17	50-003	WHITE 1 CONN. WIRE ASSEMBLY	1	1	1	1
18	GK-112-065	10-32 x 3/8" ROUND HEAD SCREW	1	1	1	1
19	GK-129-012	#10 STAR WASHER	1	1	1	1
20	GK-135-057	10-32UNC STAR LOCK NUT	1	1	1	1
21	GK-129-015	M4 External-Tooth Lock Washer	1	1	1	1
22	GK-156-092	QUICK CONNECT TERMINAL 18-14 AWG	1	1	1	1
24	GK-109-050	1/4-20UNC HEX NUT	1	1	1	1
25	GK-136-053	LOCK WASHER 1/4 BOLT	1	1	1	1
26	GK-112-123	1/4-20UNC x 2 BHCS	1	1	1	1



REVISION LIST

February 2011

Manual creation.

June 2012

Front page – Updated contact details.

Page 1 – Revised wording regarding average temperatures.

April 2015

Page 2 – Removed T17 thermometer kit.

ADDITIONAL NOTES

Specifications and products are subject to change without notice.

KAT, Moggy, Sam, KATBAK & KBM are registered trademarks of Gullco International Enterprises Ltd.

Only use genuine/authorized replacement parts.



GULLCO



LINEAR or RADIAL
HIGH DEPOSIT RATE
QUICK SETUP TIME

KAT® OSCILLATOR

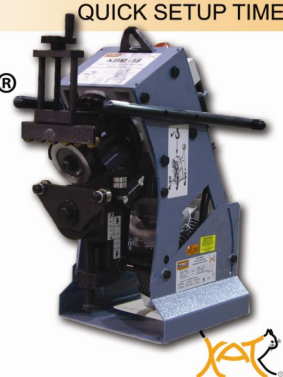
- Motorized weld center line adjustment
- Motorized stroke width
- Oscillation speed control
- Store up to 10 welding programs



PORTABLE PLATE EDGE
BEVELLING MACHINE
QUICK SETUP TIME

KBM®

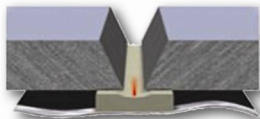
- Produce clean bevels with no thermal distortion
- Bevels angles 22° to 55° (other angles available)
- Hydraulic and Adjustable undercarriages available
- Bevels Mild Steel, Stainless Steel, and Aluminium
- Reduce cost and save time by minimising defects and poor fit up



ONE SIDED WELDING
X-RAY QUALITY BEADS
HIGH DEPOSIT RATE

KATBAK® CERAMIC WELD BACKING

- Eliminate Defects And Rework
- Eliminate Costly Unnecessary Gouging And Grinding
- Sizes 1/4" (6.3 mm) to 2" (51 mm)
- Special Sizes And Configurations Available



PORTABLE AND COMPACT
INCREASE EFFICIENCY
MORE ARC ON TIME

MOGGY® FILLET WELD CARRIAGE

- Single or Dual Torch Models
- Magnet or Non Magnetic Base
- Continuous or Stitch Welding Models
- Fillet, Lap, Butt and Dual Torch Welding

