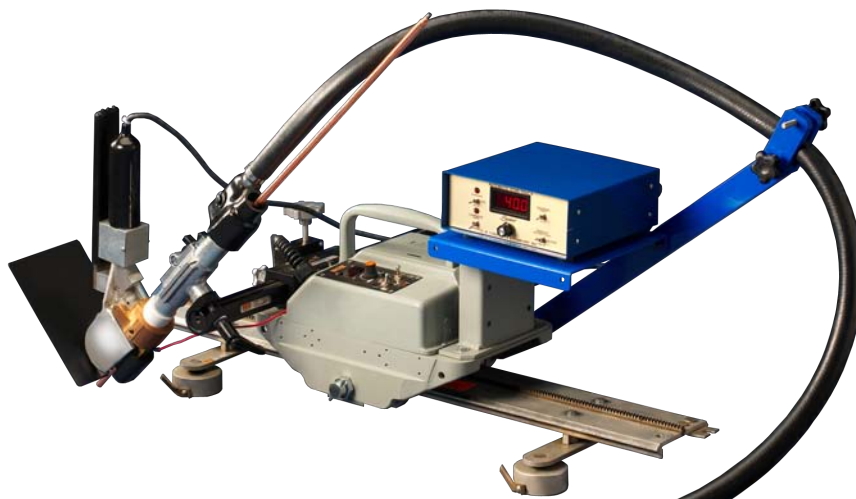


AUTOMATIC AIR ARC GOUGING SYSTEM



Designed for continuous gouging of long seams in the manufacturing process of ships, pressure vessel tanks and bridge construction.

Voltage control capabilities regulate accurate gouging depth to a machine-like tolerance of +/- 0.015" (0.4mm) even over a warped plate.

The automated gouging system is mounted on a KAT® Travel Carriage system with a holding capacity of 100 lbs. (45.3 kg.)

Total weight of the system less travel equipment (carriage and track) is 29 lbs. (13 kg.)

Equipped to work with 5/16", 3/8", 1/2" and 5/8" (8, 9.5, 13 and 16 mm) carbon rods up to 1200 amps.

Ideally suited for out-of-position work due to its light weight.

Input voltage of the control unit is: Single Phase: AC 115 / 230V 50/60Hz 100W

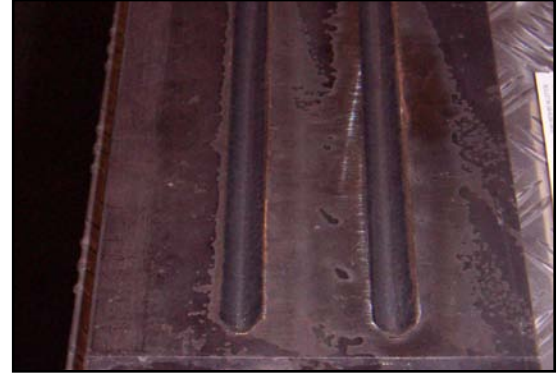
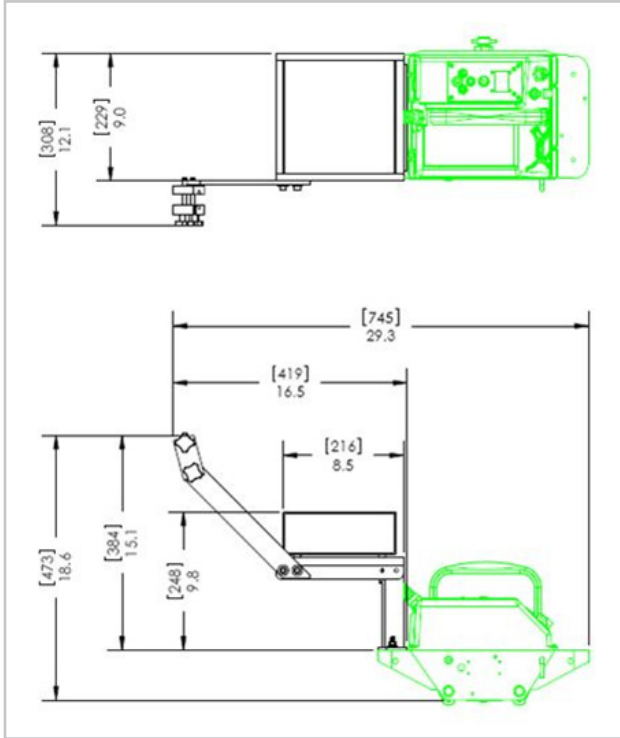


*Gouging System Dispenses Air Arc Carbon Rods*

REDUCE THE NUMBER OF WELD REJECTS AND FAILURES WITH AN AUTOMATED GOUGING SYSTEM



## SPECIFICATIONS



## SEMI-AUTOMATIC GOUGING HEAD



Semi-automatic gouging is used to produce clean "U" or "J" grooves in light and heavy plate. This product is effective on both flat and round materials.

Gouges any kind of metal quickly and at low cost with high consistency.

Equipped to work with one of three different shoe caps, each one allowing the operator to use one selected rod size.

## REQUIREMENTS

- Current from a standard welding power source
- Jointed Gouging Rods
- A minimum of 80 psi of compressed air

When using the gouging system a higher quality finish than grinding, chipping or older methods of plate preparation is achieved.

Through the use of this semi-automatic gouging system the operator is able to achieve efficient cost effective gouges with precise control which results in uniform grooves.

KAT, KBM, MOGGY, KATBAK & SAM are registered trademarks of Gullco Enterprises Limited

Distributed by:

SPECIFICATIONS ARE SUBJECT TO CHANGE WITHOUT NOTICE

**GULLCO**

### GULLCO INTERNATIONAL LIMITED - CANADA

Phone: 905-953-4140 Fax: 905-953-4138 e-mail: sales@gullco.com

### GULLCO INTERNATIONAL INC. - U.S.A

Phone: 440-439-8333 Fax: 440-439-3634 e-mail: ussales@gullco.com

### GULLCO INTERNATIONAL (U.K.) LIMITED- EUROPE

Phone: +44 1257-253579 Fax: +44 1257-254629 e-mail: sales@gullco.co.uk

### GULLCO INTERNATIONAL PTY LIMITED - AUSTRALIA

Phone: 61 (0)7 3348 5515 Fax: 61 (0)7 3348 5510 e-mail: ausales@gullco.com

### GULLCO INTERNATIONAL INDIA PVT LIMITED - INDIA

Phone: 91-20-65260382 Fax: 91-20-26836656 e-mail: india.io@gullco.com

### GULLCO INTERNATIONAL SHANGHAI LIMITED- CHINA

Phone: +8621-50460341 Fax: +8621-50463554 e-mail: gsuntech@sh163.net

### GULLCO INTERNATIONAL LIMITED- LATIN AMERICA

Phone: 55-11-9485-1336 e-mail: rogerio.macedo@gullco.com

### STUCH GMBH & Co. KG SCWEISSTECHNIK - GERMANY

Phone: (02 03) 72 94 95 Fax: (02 03) 72 94 96 e-mail: info@stuch-schweisstechnik.de